

# A26010 BIKE MOUNT KIT

## Owner's Manual



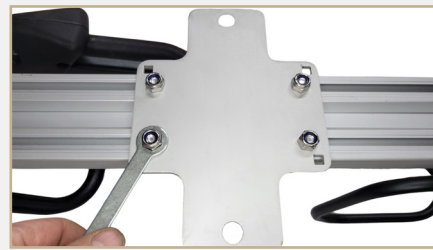
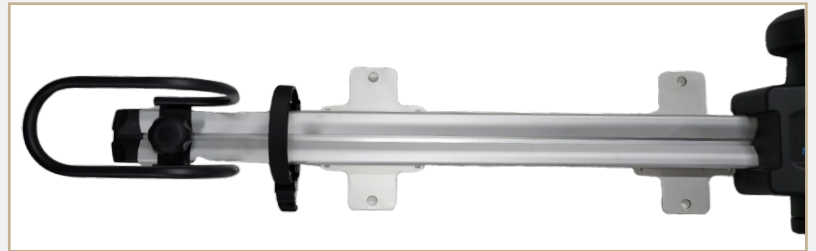
### OVERVIEW

The bike mount kit is an excellent way to haul a bike on Truckify rack systems. The bike mount attaches to the crossbars of either the Truckify 6" Rack Kit or the Full Rack Kit. The mount is designed to haul bikes of many different sizes, providing a universal way to mount most types of bikes. Please read the instructions carefully, and be sure to follow each step as shown, to ensure a proper and safe installation.

### STEP 1

Before installation, make sure that the bike mount is set up in this sequence. Be sure that each bracket and mounting attachment is set up in this way. The bike mount is strongest when the brackets are farther apart. The minimum width of the mounting brackets is 20 inches apart.

*Please check this measurement, it is very important.* Use a tape measure to measure the width of the brackets and see if they are 20 inches apart. If they need to be adjusted, use the provided wrench on the keychain to loosen the nuts, and slide the brackets to meet this measurement, and after they are adjusted, make sure that the mounting brackets are bolted tightly.

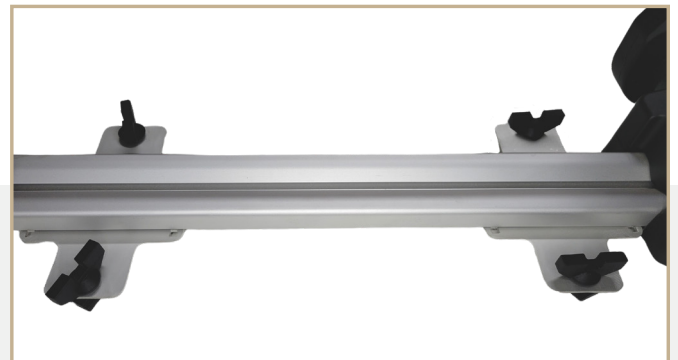


### STEP 2

Loosely screw (4) Wing Bolts and (4) T Nuts together on the mounting brackets.

### STEP 3

Adjust your rack crossbars to the proper width of the bike mount brackets.



**STEP 4**

Slide the bike mount on the rack crossbars, make sure that the T Nuts are sliding into the T slots of the rack. Extend the frame grab bar all the way out, and swing the arm so it is near the back of the mount as shown. Extend the front wheel mount out as well. Take the ratcheting rear wheel strap out so it is loose. Also, loosen the rear wheel bar so it can be easily adjusted.



**STEP 5**

Lift the bike onto the mount. Firstly, clamp the frame grab bar onto the top of the bike's frame tightly. This will hold the bike in place so that you can attach the other mounts without needing to hold the bike up during the process. Make sure the front wheel is sitting in the front wheel mount properly.



**STEP 6**

Through the rear wheel of the bike, loop the ratcheting strap around, as shown in the picture below, and tighten the strap. The tab near the ratchet can be pushed to release the strap and be removed. The strap is mounted in between the spokes as shown. Make sure the strap is placed at the very bottom center of the bike rim. If you need to adjust the placement of the strap, there is a nut at the bottom you can use to loosen and adjust the strap by hand. Make sure the nut is tightened after it has been adjusted.



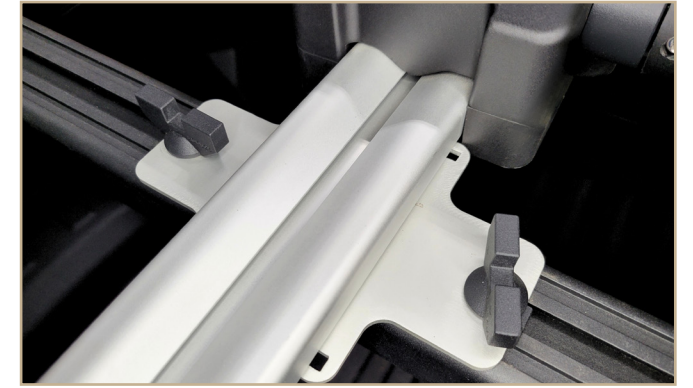
**STEP 7**

Slide the rear wheel mount against the rear wheel of the bike, and tighten down the knob by hand.



**STEP 8**

Tighten all (4) Wing Bolts and T Nuts on both of the mounting brackets.



**STEP 9**

Finally, you have the option to lock the bike mount, to better prevent theft, using the keys provided.



**STEP 10**

After tightening by hand, if the Wing Bolts are stuck and unable to be loosened, a crescent wrench or a screwdriver can be used to loosen them.



## **Warning and Safety Instructions**

- No more than 4 bikes or bike mounts should be installed on any Truckify racks.
- Failure to follow proper installation instructions could lead to serious injury of people and equipment
- Driving with loose or untightened fasteners could lead to serious injury or damage to equipment
- This bike mount kit is not completely protected against theft of the bike
- Hauling a bike on this bike mount could cause height clearance issues, causing injury or damage to equipment. Always pay attention to the height of your bike, especially in parking garages, offroad, and other places where height is low.
- Do not attempt to mount fat tire bikes, with a tire width of greater than 2.75", on this bike mount, as the front and rear wheels will not sit properly in the mounts.
- This mount is intended for use only with pedal bicycles or e bikes, do not attempt to mount dirt bikes, mopeds, or anything other than a bicycle.
- The wing bolts are only intended to be tightened by hand.

Replacement/new parts can be found on our website: **Truckify.com**

- A16026 Wing Bolt T Nut Kit
- A26010 Bike Mount Kit

## **Returns**

All returned products must have prior authorization from Truckify before they are shipped back to our facility. Returned products without pre-authorization are not eligible for credit. There will be a 20% restock fee on returned items. Products must be returned within 60 days of the date of sale to be eligible for credit. To request a return, go to our website, Truckify.com, under returns, to submit a return.

## **Warranty**

This product comes with a limited one year warranty. Products manufactured by Truckify are warranted to be free of defects due to faulty material or workmanship for 12 months from the date of purchase. Normal wear and tear is not considered a defect in material or workmanship. Liability under this warranty is limited to the replacement of the defective part provided that the following conditions are met:

- Truckify is promptly notified in writing of such defect immediately upon discovery, and the defective product is returned for inspection
- The defect is not due, without limitation, to faulty installation, misalignment of the product, vibration, pressure pulsations, ordinary wear and tear, corrosion, ultraviolet degradation, operation outside the product specified limits and using the product for uses other than its intended use



877-885-4994

Truckify.com

support@truckify.com

9479 County Road E,  
Arpin, WI 54410