

RACKIFY RACK SYSTEM

Owner's Manual



OVERVIEW

Thank you for purchasing a rack system for your Truck Bed Raiser. Whether you are on the job or hauling gear for a trip, the Rackify Rack System is designed to haul your gear above your bed cover. Most bed covers will be able to open and close with the rack in place. After the first installation, it is designed to be mostly tool free, and everyday adjustments are done quickly and easily by hand. Please follow all installation instructions step by step for proper installation. This manual covers installation for 3 different kits that are all compatible with each other: The 6" Rack Kit, the Telescoping Arms Kit, and the Full Rack Kit. If you only bought the 6" Rack Kit, you can easily turn your 6" Rack Kit into a Full Rack Kit (Over the cab kit) at any point by purchasing the Telescoping Arms kit from Truckify.com.

TOOLS NEEDED

- Standard Drill
- 5/32" Allen Driver Bit (From Truck Bed Raiser Kit)
- 7/16" Socket
- 7/16" Wrench
- Ratchet or Small Impact

STEP 1

Unpackage your kit, and grab the following parts: (8) #10 Self Drilling Screws X 1" Long, (2) Rack Crossbars, and (4) R01007 End Caps. Using a standard drill only, screw on all (4) R01007 end caps on the ends of the Rack Crossbars. Make sure that you do not overtighten the self drilling screws, because they snap off easily if overtightened.



STEP 2

From your kit, grab (4) R01006 6" Side Arms, (8) A06026 Wing Bolts, and (8) A06027 T Nuts. Loosely assemble the Wing Bolts and T Nuts into the 6" Rack Side Arms as pictured.



STEP 3

Slide the 6" Side Arms into the T-Slots of your Truck Bed Raiser from the rear. Swivel the T Nuts so that they slide into the T-Slots properly. Space them apart based on the gear that you are going to be hauling. The farther they are apart, the more stable it will be.



STEP 4

(If you are installing a Full Rack Kit or Telescoping Arms Kit, skip this step) Grab both of the Rack Crossbars, and lay them across the tops of the 6" Side Arms. Center the Rack Crossbars between the 6" Side Arms, and check that the Rack Crossbars are square/ parallel with each other, you may have to adjust the 6" Side Arms to square it up. After it's square, then tighten all (8) Wing Bolts on the 6" Side Arms.



Insert a T Nut into the Rack Crossbar T-Slot, thread in a Wing Bolt, and tighten as pictured. Do this on all (4) 6" Side Arms.

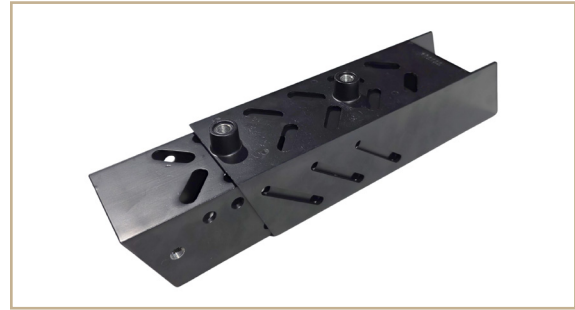
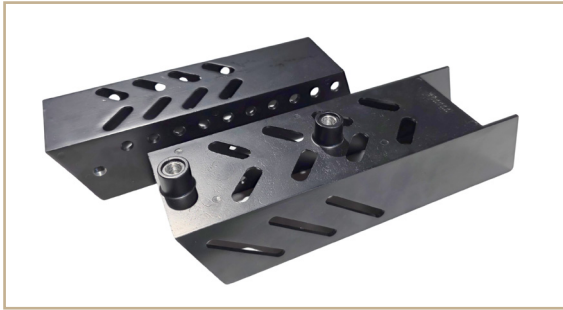


STEP 5

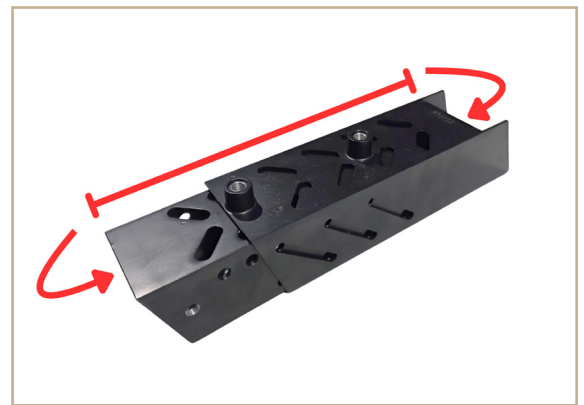
(For Full Rack Kit/ Telescoping Arms Kit) Slide one of the 6" Side Arms close to the cab of your truck, grab a tape measure, and measure from the top of the 6" Side Arm to the top of your truck cab to get your cab height. This can be tricky to get a good measurement, because truck roofs are rounded, so it helps to have another person standing in the bed taking the measurement.



Unpackage and get the Telescoping Arms from your kit: (4) R01010 and (4) R01011. The R01011 fits over the R01010. They fit together as pictured.



From your kit, grab all of the 1/4" x 3/4" Long Bolts, 1/4" Washers, and 1/4" Locknuts. This step is for setting the Over Cab height of your truck on the Telescoping Arms. On the measurement you took of your cab height, subtract 2 from the measurement (This accounts for the height of the Rack Crossbars). With the Telescoping Arms loosely fitted together, measure between these two points (Pictured Below) and pull them apart or together to your measurement. (Line up the holes so you can bolt it together).



On each Telescoping Arm, use (4) 1/4" x 3/4" Long Bolts, (8) 1/4" Washers, and (4) 1/4" Locknuts (2) bolts on each side. Assemble all the bolts in first before tightening them. The Telescoping Arms are strongest when you can put one in the top and one in the bottom on each side as pictured.

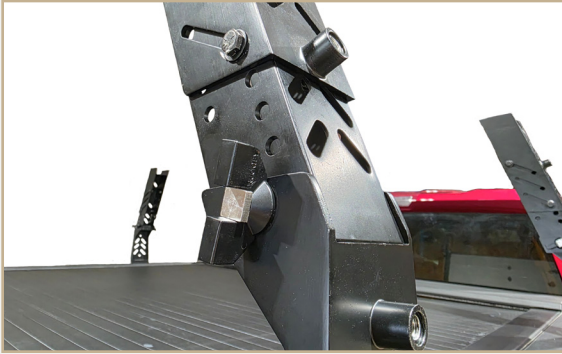


Tighten all the bolts. It's fastest to use an impact gun.



STEP 6

Attach all (4) Telescoping Arms to the tops of the 6" Side Arms using (2) Wing Bolts on each. Tighten by hand.



STEP 7

Grab both of the Rack Crossbars from your kit, and lay them across the top of the Telescoping Arms. Center the crossbars.



STEP 8

Fasten each Telescoping Arm to the Rack Crossbar by sliding (1) T Nut into the Rack Crossbar and tighten (1) Wing Bolt by hand as pictured. Make sure to pull each Telescoping Arm so that it mounts square, and not leaning at an angle, otherwise the crossbar will come loose and potentially cause damage (Pictured). Repeat this process on all (4) Telescoping Arms.

CORRECT INSTALLATION

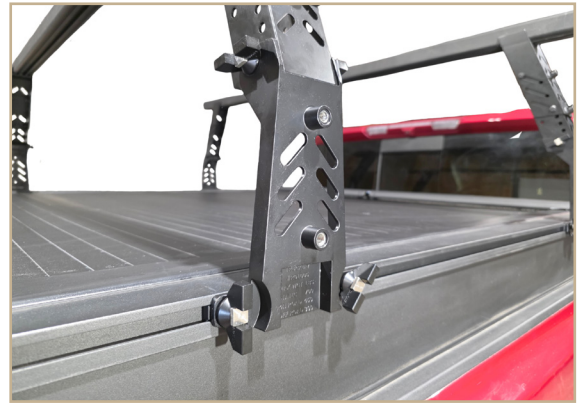


IMPROPER INSTALLATION



STEP 9

Check that the Rack Crossbars are parallel and sitting square. You may have to get up in the truck bed to see it better. After squaring them up, you can tighten the remaining (8) Wing Bolts by hand on the 6" Side Arms.



Your rack system is now installed.

Check all Wing Bolts and make sure that they are tight each time you drive your truck with the rack installed. Driving and hauling with the rack on can cause shifting and loosening of the fasteners

Check out Truckify.com to see all the accessories available for your rack system.

Replacement/new parts can be found on our website: Truckify.com

- R21215 6" Rack Kit
- R21207 Telescoping Arms Kit
- R21205 Full Rack Kit
- A16026 Wing Bolt T Nut Kit

Warning and Safety Instructions

- Driving with loose bolts or fasteners could lead to serious injury of people and damage to equipment
- Failure to follow proper installation instructions could lead to serious injury of people and damage to equipment
- Never exceed the weight limits on the rack system. The weight limits are as follows:
700 LBS Maximum Static Load (Parked Vehicle)
450 LBS Maximum Load for On Road driving
300 LBS Maximum Load for Off Road or Rough Roads
- Always secure your cargo before driving
- Do not haul any cargo that is wider than the mirrors of the vehicle
- Space the Rack Crossbars according to your cargo. The Rack Crossbars must be set at a minimum of 2 feet apart when in use.

Returns

All returned products must have prior authorization from Truckify before they are shipped back to our facility. Returned products without pre-authorization are not eligible for credit. There will be a 20% restock fee on returned items. Products must be returned within 60 days of the date of sale to be eligible for credit. To request a return, go to our website, Truckify.com, under returns, to submit a return.

Warranty

This product comes with a limited one year warranty. Products manufactured by Truckify are warranted to be free of defects due to faulty material or workmanship for 12 months from the date of purchase. Normal wear and tear is not considered a defect in material or workmanship. Liability under this warranty is limited to the replacement of the defective part provided that the following conditions are met:

- Truckify is promptly notified in writing of such defect immediately upon discovery, and the defective product is returned for inspection
- The defect is not due, without limitation, to faulty installation, misalignment of the product, vibration, pressure pulsations, ordinary wear and tear, corrosion, ultraviolet degradation, operation outside the product specified limits and using the product for uses other than its intended use



877-885-4994
Truckify.com
support@truckify.com
9479 County Road E,
Arpin, WI 54410

